



# SLEEK

A STATE-OF-THE-ART DEVELOPMENT THAT STANDS  
OUT FROM THE CROWD.

# LUXURIOUS

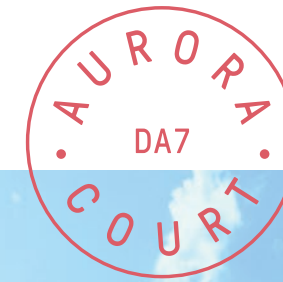
NO EXPENSE HAS BEEN SPARED TO CREATE AN  
UNRIVALLED SPECIFICATION THROUGHOUT.

# HIGH-TECH

ALL APARTMENTS COME FITTED WITH THE LATEST  
IN SMART HOME TECHNOLOGY.

# LIGHTING UP BEXLEYHEATH

AURORA COURT IS A BOUTIQUE NEW DEVELOPMENT  
OF LUXURY 1 AND 2 BEDROOM APARTMENTS LOCATED  
IN BEXLEYHEATH.



Computer generated image.

Providing an unrivalled specification throughout, all apartments come with the latest in smart home technology courtesy of Wondrwall intelligent living systems, large open-plan living/dining/kitchen spaces and spacious bedrooms with built-in wardrobes fitted in all master bedrooms.

Kitchens are beautifully crafted with soft-close drawers and doors, Silestone Quartz worktops and integrated Smeg appliances.

Modern bathrooms come complete with contemporary matt black fixtures & fittings including mixer taps, heated towel rails and luxury shower screens.

All apartments benefit from private outside spaces by way of either a private garden or balcony, whilst there is also a communal garden complete with BBQ area and secure cycle store.

Further benefits include off-street parking (available to purchase), electric car charging points, video entry system, a 10 year build warranty and 999 year leases.









# THE SMART MOVE

**WONDRWALL IS A PIONEERING INTELLIGENT LIVING SYSTEM THAT MAKES YOUR HOME ADAPT TO YOUR NEEDS AND DESIRES – AUTOMATICALLY CONTROLLING HEATING, LIGHTING, SECURITY AND SAFETY, WITH VOICE CONTROL TECHNOLOGY TO CHANGE ANY OF THE SETTINGS AT ANY TIME.**

Wondrwall learns and works around you, observing how you actually live, which rooms you spend the most time in and how you use heating and lighting. It seamlessly and intelligently supports and enhances your living environment and reduces energy consumption and costs without your input.

wondrwall®





# ATTENTION TO DETAIL

FROM SLEEK SILESTONE QUARTZ WORKTOPS AND INTEGRATED SMEG APPLIANCES, TO MATT BLACK HEATED TOWEL RAILS AND MIXER TAPS, EVERY SINGLE DETAIL HAS BEEN CAREFULLY CRAFTED TO PERFECTION.











# AN UNRIVALLED SPECIFICATION

## INTERIOR FINISHES

- State-of-the-art Wondrwall© intelligent living home system automatically controlling heating, lighting, security, safety and music – also links with Amazon Echo
- USB ports to selected sockets
- White contemporary panel doors
- Matt black door furniture and hinges
- Laminate flooring throughout lounge, kitchen and hallways, with fitted carpets to bedrooms
- Gas central heating
- Built-in wardrobe to main bedroom

## KITCHENS

- Smeg integrated dishwasher, microwave, fridge/freezer and oven
- Smeg induction hob with concealed extractor
- Silestone Quartz worktops and mirrored splashbacks
- Washer/dryer to kitchens or utility cupboard
- All cabinet doors and drawers include soft-closing feature

## BATHROOMS

- Modern bathroom suites
- Heated black towel rail
- Contemporary black mixer tap
- Luxury black trimmed shower screens
- Baths with showers\*
- Tiled flooring
- Feature tiled wall to bath areas

## EXTERNAL/COMMUNAL

- Lift servicing all floors
- Secure cycle storage
- Bin storage
- Communal garden
- Communal BBQ area
- All apartments offer private gardens, terraces or balconies

## SECURITY AND PEACE OF MIND

- 999 year leases
- 10 year Buildzone Warranty
- Video entry system linked to main entrance door
- Wondrwall© security system
- Parking spaces (available to purchase)
- Electric car charging points (selected spaces)

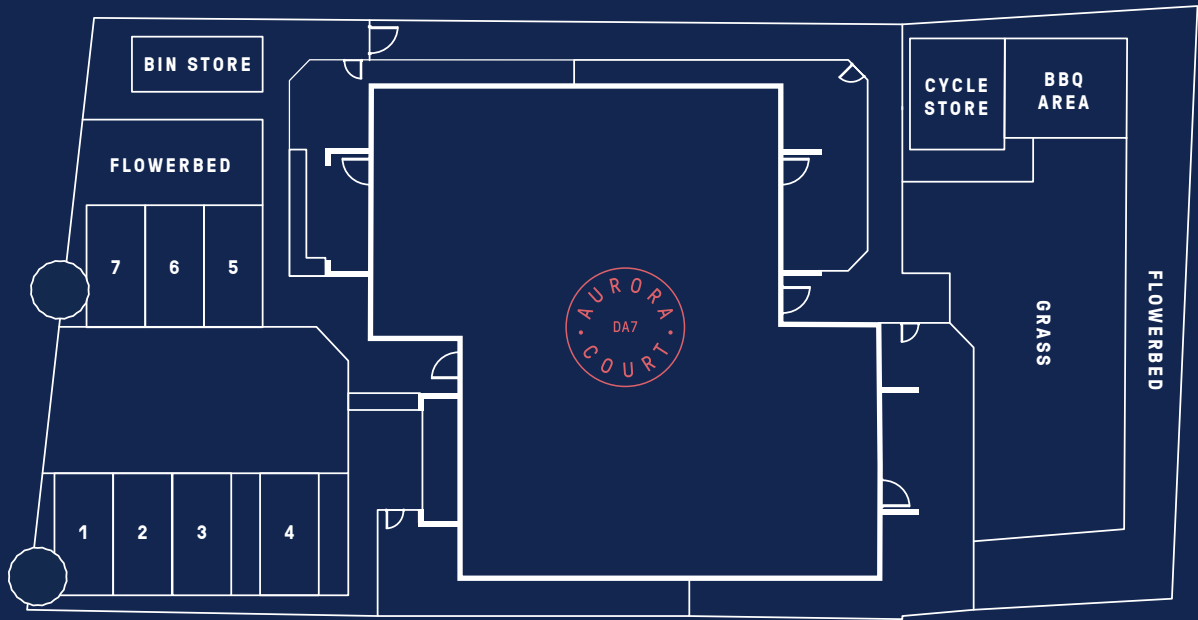
\*Please note, apartment 2 comes with a shower only.



# PLANNED TO PERFECTION

EACH AND EVERY APARTMENT HAS BEEN METICULOUSLY DESIGNED TO MAXIMISE SPACE AND LIGHT – RESULTING IN WONDERFULLY BRIGHT, OPEN-PLAN SPACES.

SITE PLAN



## GROUND FLOOR

### APARTMENT ONE

Living/kitchen/dining  
7.6m x 3.6m      24ft 11 x 11ft 10

Bedroom one  
4m x 3.8m      13ft 1 x 12ft 6

Bedroom two  
5.2m x 2.8m      17ft 1 x 9ft 2

### APARTMENT TWO

Living/kitchen/dining  
8.8m x 3.4m      28ft 10 x 11ft 2

Bedroom  
4.9m x 3.5m      16ft 1 x 11ft 6

### APARTMENT THREE

Living/kitchen/dining  
7.5m x 3.8m      24ft 7 x 12ft 6

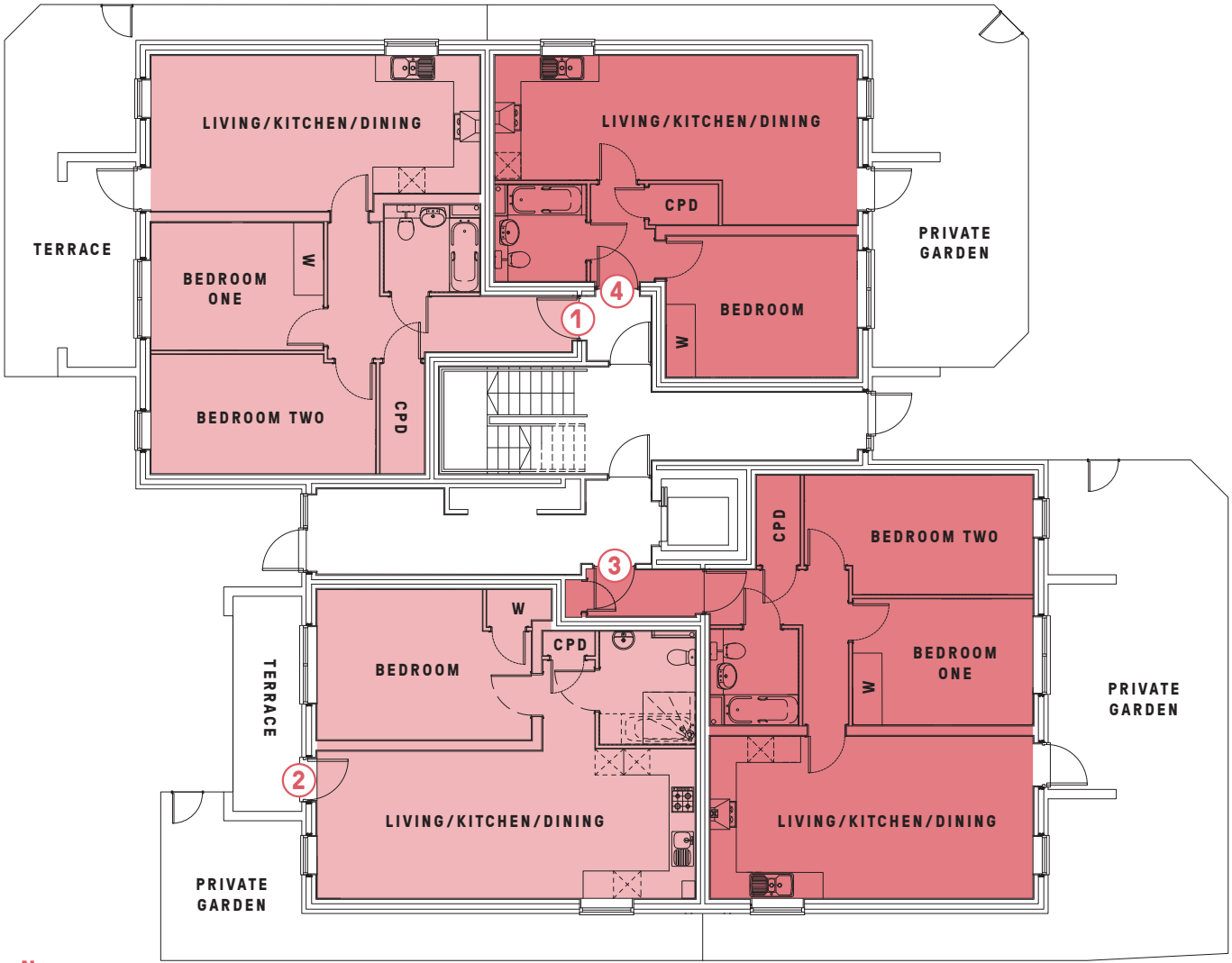
Bedroom one  
4.2m x 2.9m      13ft 9 x 9ft 6

Bedroom two  
5.2m x 2.8m      17ft 1 x 9ft 2

### APARTMENT FOUR

Living/kitchen/dining  
8.4m x 4m      27ft 7 x 13ft 1

Bedroom  
4.5m x 3.3m      14ft 9 x 10ft 10





FIRST FLOOR

APARTMENT FIVE

Living/kitchen/dining  
7.6m x 3.6m      24ft 11 x 11ft 10

Bedroom one  
5.2m x 2.8m      17ft 1 x 9ft 2

Bedroom two  
4m x 3m      13ft 1 x 9ft 10

APARTMENT SIX

Living/kitchen/dining  
8.8m x 3.4m      28ft 10 x 11ft 2

Bedroom one  
4.1m x 2.9m      13ft 5 x 9ft 6

Bedroom two  
4.3m x 2.8m      14ft 1 x 9ft 2

APARTMENT SEVEN

Living/kitchen/dining  
7.5m x 3.8m      24ft 7 x 12ft 6

Bedroom one  
5.3m x 2.8m      17ft 5 x 9ft 2

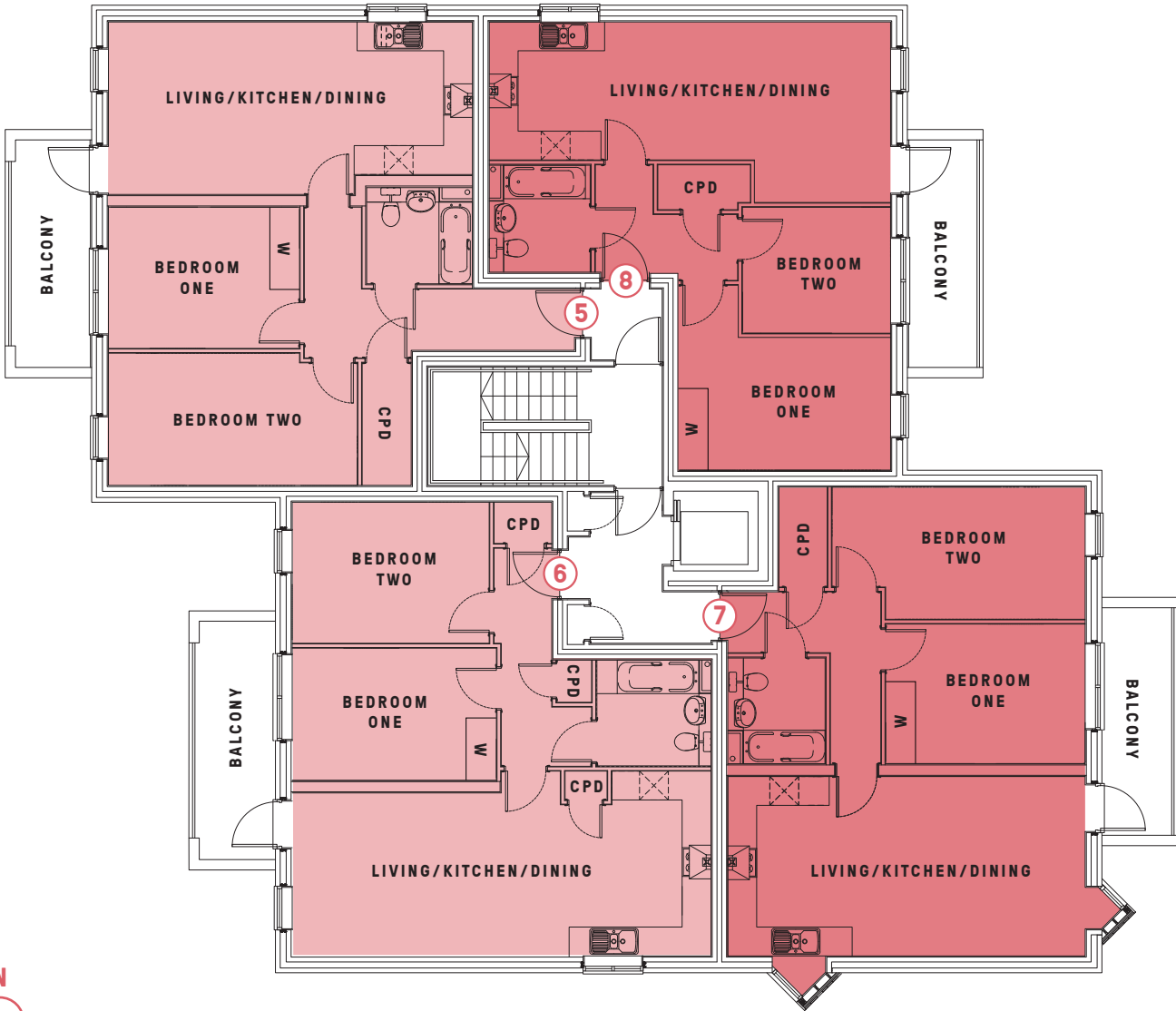
Bedroom two  
4.2m x 2.9m      13ft 9 x 9ft 6

APARTMENT EIGHT

Living/kitchen/dining  
8.4m x 3.8m      27ft 7 x 12ft 6

Bedroom one  
4.5m x 2.8m      14ft 9 x 9ft 2

Bedroom two  
3.1m x 2.6m      10ft 2 x 8ft 6



SECOND FLOOR

APARTMENT NINE

Living/kitchen/dining  
4.4m x 4.4m      14ft 5 x 14ft 5

Bedroom one  
3.2m x 4.1m      10ft 6 x 13ft 5

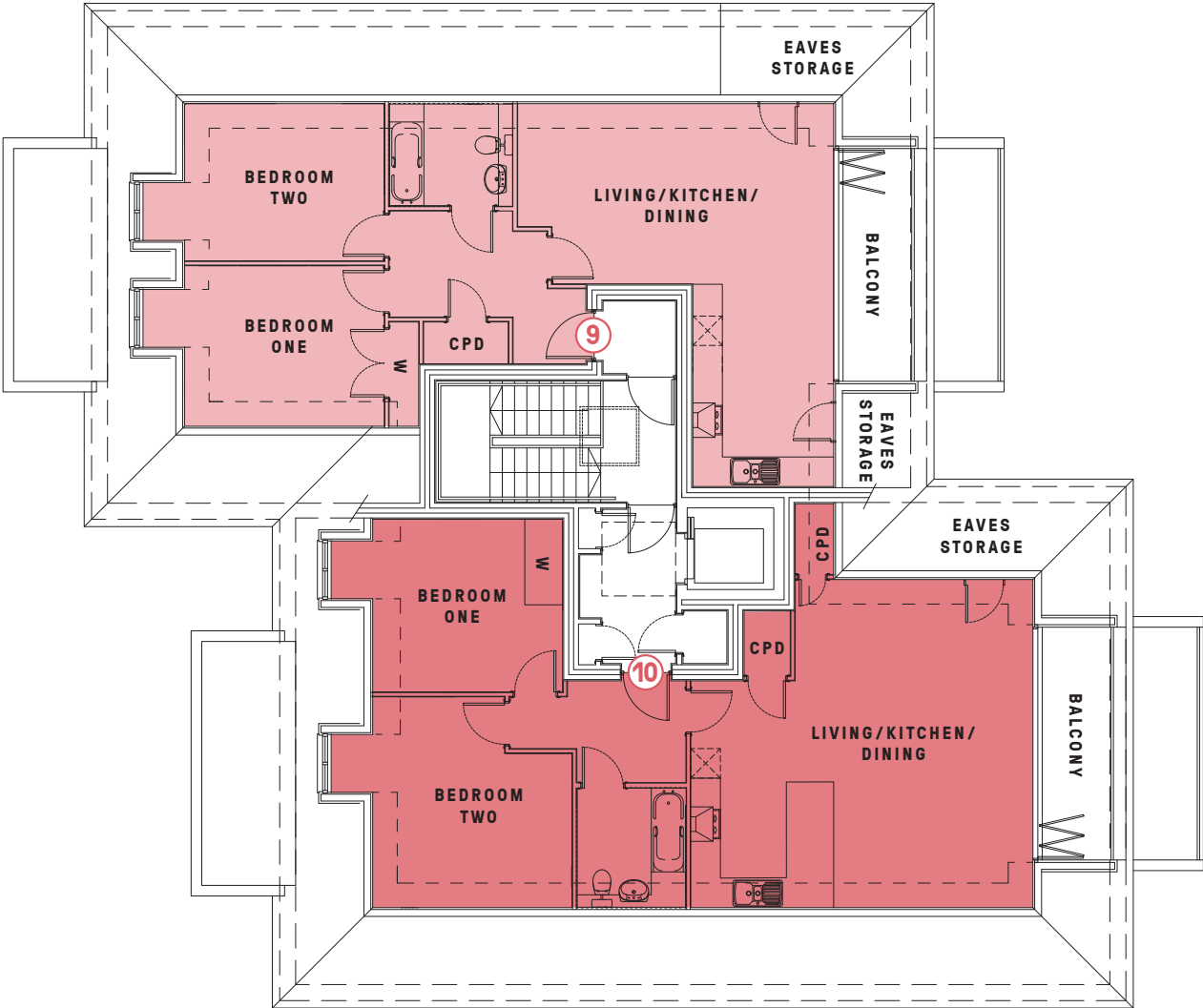
Bedroom two  
3.3m x 4.1m      10ft 10 x 13ft 5

APARTMENT TEN

Living/kitchen/dining  
7m x 6.7m      23ft x 22ft

Bedroom one  
4.3m x 4.1m      14ft 1 x 13ft 5

Bedroom two  
3.9m x 3.6m      12ft 10 x 11ft 10















# PEACEFUL

PERFECTLY TUCKED AWAY IN A QUIET RESIDENTIAL  
AREA OF BEXLEYHEATH.

# CONVENIENT

JUST A SHORT STROLL FROM THE VAST ARRAY OF  
AMENITIES THAT BEXLEYHEATH HAS TO OFFER.

# PICTURESQUE

SURROUNDED BY BEAUTIFUL OPEN GREEN SPACES  
AND PARKS.



# A STONE'S THROW FROM IT ALL

## SHOPPING

1. Sainsbury's Local
2. Co-op
3. Asda Superstore
4. Broadway Shopping Centre

## PUBS AND BARS

5. The Kentish Belle Ale House & Gin Palace – British
6. Blend Bar & Grill
7. The Golden Lion
8. The Rose
9. The Kings Arms

## RESTAURANTS

10. The Jasmine By Spice Nouv-Oh! – Indian
11. Hazine – Turkish
12. Stuzzichini – Italian
13. The M Kitchen – Turkish
14. Delicio – Mediterranean
15. Cuore Food From The Earth – Italian
16. Il Vesuvio Restaurant – Italian

## LEISURE

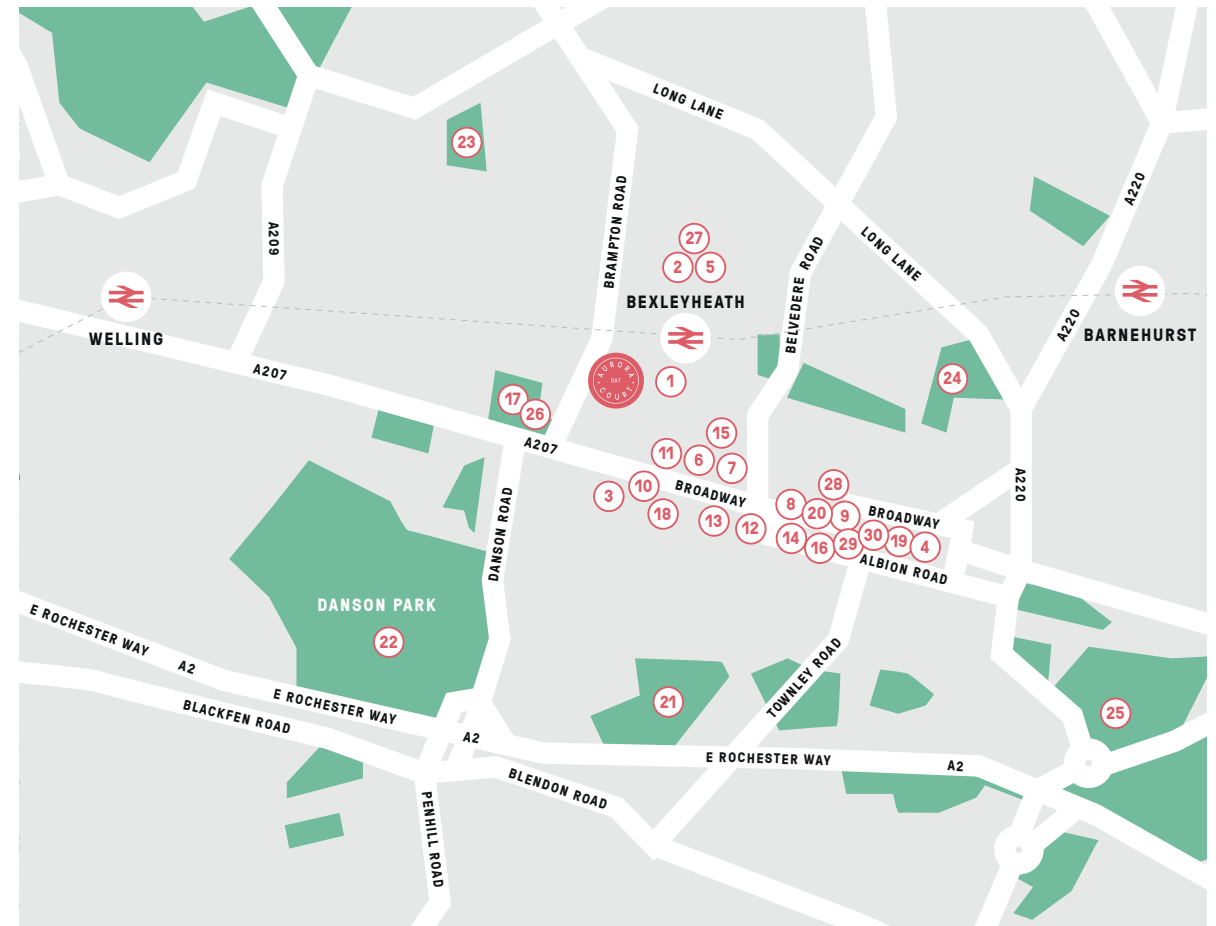
17. Crook Log Leisure Centre
18. Better Gym
19. The Gym
20. Anytime Fitness
21. Bexleyheath Golf Club

## GREEN SPACES

22. Danson Park
23. Stevens Park
24. Russell Park
25. Hall Place & Gardens

## BEAUTY

26. Amara Health & Beauty Day Spa
27. Gems Health & Beauty Salon
28. Indulgence Beauty Salon
29. Rose Beauty Hub
30. Emma's Beauty





# STAY CONNECTED

JUST A 5 MINUTE WALK TO BEXLEYHEATH STATION GIVES YOU LINKS TO SOME OF LONDON'S KEY TRAIN STATIONS, MAKING FOR AN EFFORTLESS COMMUTE.



## BEXLEYHEATH

(5 MINUTE WALK)

23 MINS – LONDON CANNON STREET

26 MINS – LONDON BRIDGE

40 MINS – LONDON CHARING CROSS

43 MINS – LONDON VICTORIA



## BY CAR

16 MINS – BLUEWATER

17 MINS – EBBSFLEET INTERNATIONAL

25 MINS – GREENWICH





# GET IN TOUCH



Available with just a  
5% deposit on Help to Buy

**Selling agent:**



**acorn**  
New Homes

**For more information contact:**  
**020 8315 6996**  
**[acorngroup.co.uk/newhomes](http://acorngroup.co.uk/newhomes)**

**Developed by:**



TRANQUIL HOMES

These particulars are provided as a guide to what is being offered and are subject to contract and availability. Whilst showing the general specification and design of the properties we reserve the right and liberty at our discretion to amend or vary. All measurements are approximate and taken at the maximum points and should not be relied upon. Layouts, sizes and specification are not final and may change at the developer's discretion. We advise that any prospective purchasers employ their own independent experts to verify the statements herein. Map for reference purposes only. Not to scale. All information and images provided are the property of The Acorn Group and may not be used or replicated in part or full without prior permission from The Acorn Group.



